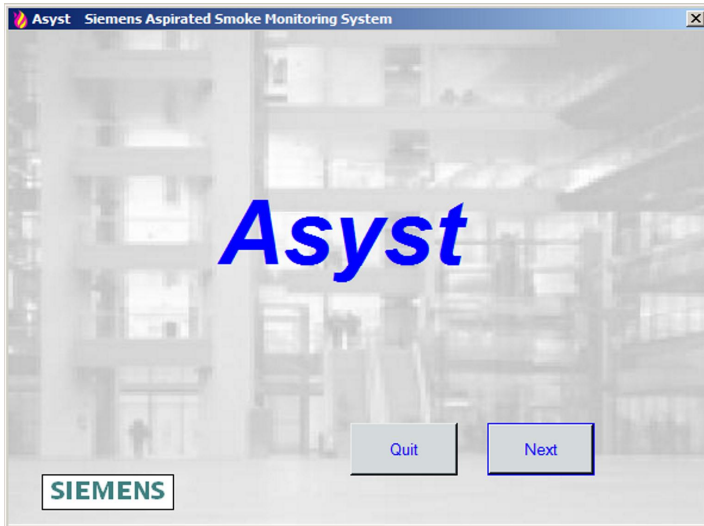


SIEMENS



FXS2055

ASD Asyst Tool

Installation

Legal notice

Technical specifications and availability subject to change without notice.

© 2010 - 2014 Copyright by Siemens Switzerland Ltd

Transmittal, reproduction, dissemination and/or editing of this document as well as utilization of its contents and communication thereof to others without express authorization are prohibited. Offenders will be held liable for payment of damages. All rights created by patent grant or registration of a utility model or design patent are reserved.

Issued by:

Siemens Switzerland Ltd.

Infrastructure & Cities Sector

Building Technologies Division

International Headquarters

Gubelstrasse 22

CH-6301 Zug

Tel. +41 41 724-2424

www.siemens.com/buildingtechnologies

Edition: 2014-01-31

Document ID: A6V10344957_b_en_--

Table of contents

1	Figures	4
2	Introduction	5
2.1	General	5
2.2	Installation File	5
3	Installation of the ASD Asyst Tool Software	6
3.1	.NET Framework Screen	6
3.2	Installation Screen	7
3.2.1	Destination Folder.....	7
3.2.2	Browse For Folder	8
3.2.3	Starting Installation	8
3.3	Installation Progress Screen	9
3.3.1	Installation Progress	9
3.3.2	Installation Details.....	9
4	Uninstalling the Asyst Tool.....	10
4.1	Asyst Tool Uninstallation Screen.....	10
4.1.1	Uninstallation Path.....	10
4.2	Uninstallation Status Screen.....	11
4.2.1	Uninstallation Progress Display.....	11
4.2.2	Terminating Uninstallation.....	11

1 Figures

Figure 1	Selecting the user language
Figure 2	.NET Framework screen
Figure 3	Asyst Tool installation screen
Figure 4	Asyst Tool installation directory browser screen
Figure 5	Asyst Tool installation progress screen
Figure 6	Asyst Tool uninstallation screen
Figure 7	Asyst Tool uninstallation status

2 Introduction

2.1 General

This manual describes the steps to install and to uninstall the ASD Asyst Tool. Installation and uninstallation are carried out in English. After installation, start the FXS2055 Asyst Tool software and select the user language of the Asyst Tool under 'Configuration' => 'Language'.

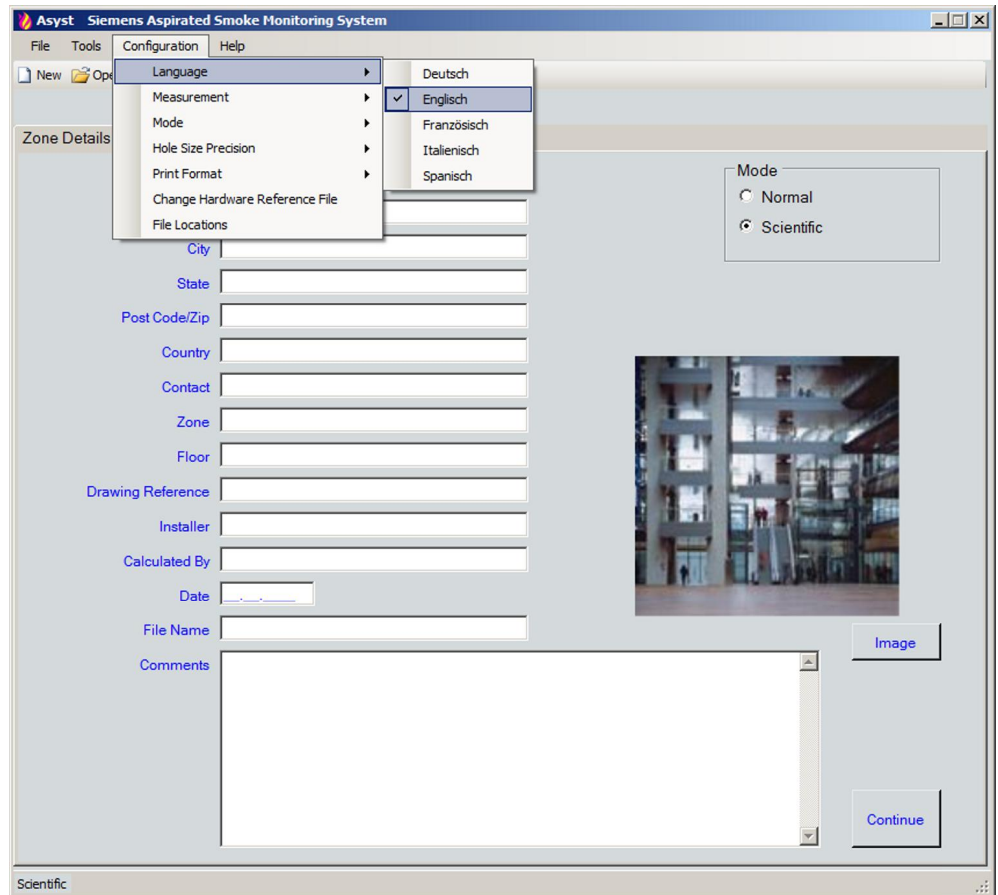


Figure 1 Selecting the user language

2.2 Installation File

The ASD Asyst Tool installer is an executable file named **F-ASD2301-1.0.3.exe**. To install the Asyst Tool, run this file on the host computer, following the prompts below.

3 Installation of the ASD Asyst Tool Software

3.1 .NET Framework Screen

The ASD Asyst Tool needs Microsoft's .NET Framework installed on the host computer running the Asyst Tool.

During the installation of the Asyst Tool, the installer checks if a suitable version of the .NET Framework has been installed and issues a warning if this is not the case.

To install this software on your PC, go to <http://msdn.microsoft.com/> and follow the prompts to download a suitable version. The Asyst Tool requires version 2.05 or higher to operate.

Figure 2 shows the .NET Framework screen.

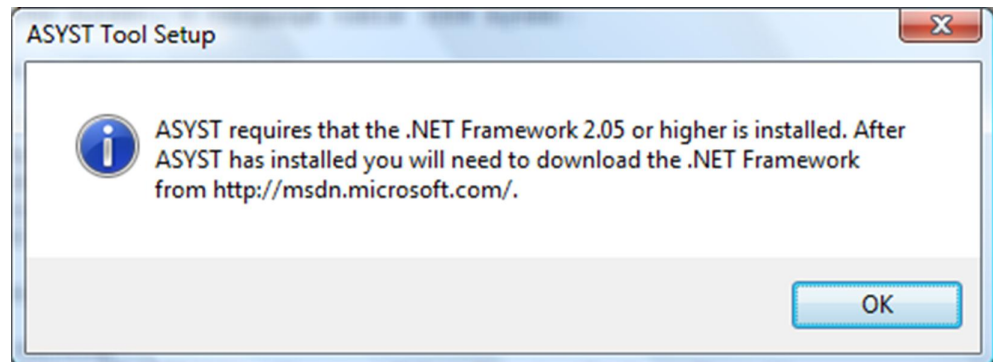


Figure 2 .NET Framework screen

Prior to the actual installation of the Asyst Tool, the installer displays this screen if the .NET Framework is not found on the host computer or if an older version is found.

3.2 Installation Screen

Figure 3 shows the ASD Asyst Tool installation screen

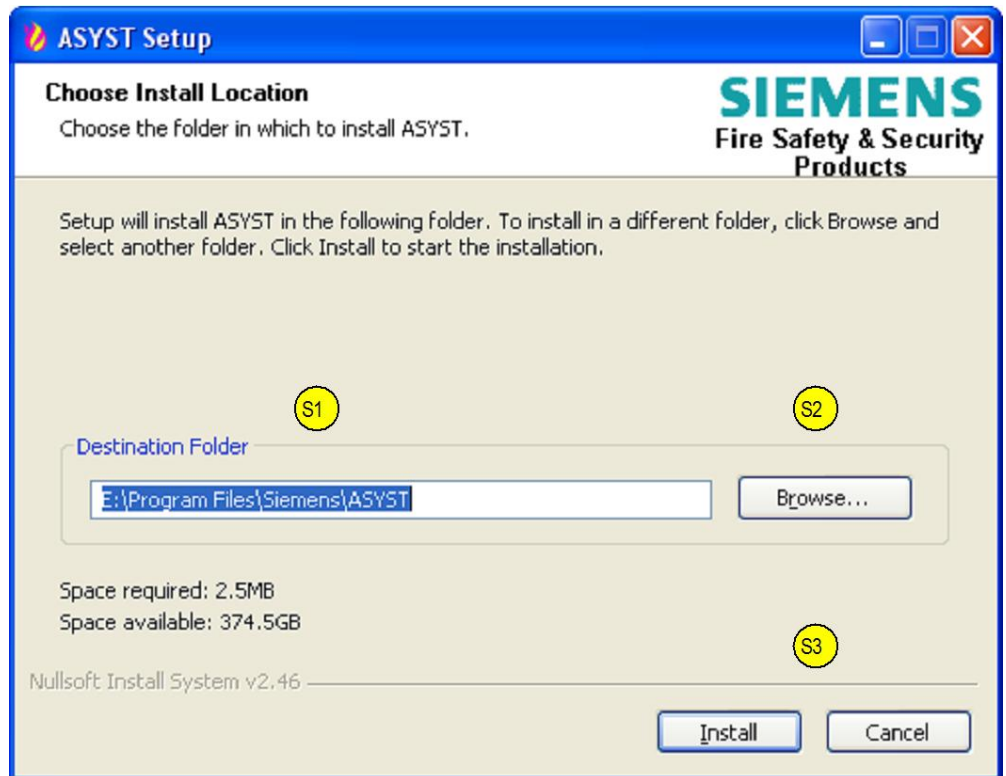


Figure 3 Asyst Tool installation screen

This screen is used to set the installation location for the Asyst Tool and to start the installation of the Asyst Tool.

3.2.1 Destination Folder

Area 'S1' contains the destination folder.

By default, the Asyst Tool installer is set to use the program files directory on the host computer. If the proposed destination folder is not suitable, click on the Browse button at 'S2' to select a suitable destination folder.

3.2.2 Browse For Folder

Figure 4 shows the 'Browse For Folder' screen.



Figure 4 Asyst Tool installation directory browser screen

Area 'S4' shows the current directory structure. Click on a folder to select that folder to be used as the installation folder or click on the 'Make New Folder' button ('S5') to create a new folder to be used as the installation folder.

Click on the 'OK' button at 'S6' to accept the selected folder or the 'Cancel' button to cancel the selection of a different installation folder.

3.2.3 Starting Installation

Click on the 'Install' button at 'S3' to install the ASD Asyst Tool or the 'Cancel' button to cancel the installation.

3.3 Installation Progress Screen

Figure 5 shows the installation progress screen.

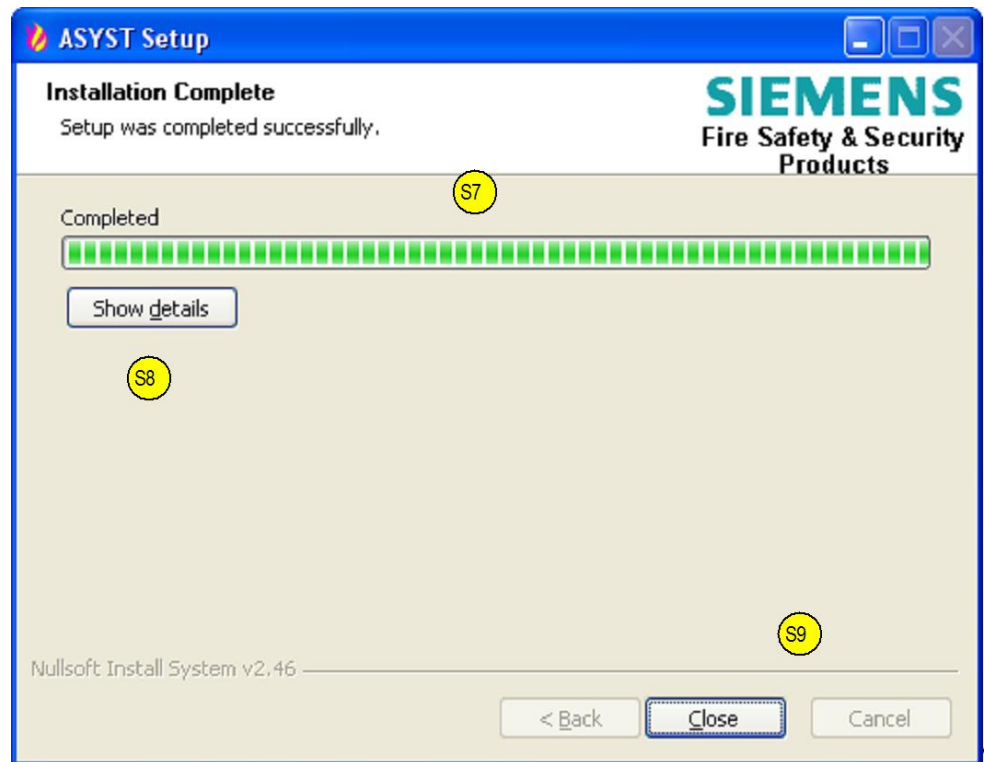


Figure 5 Asyst Tool installation progress screen

This screen shows the progress of the installation of the ASD Asyst Tool.

3.3.1 Installation Progress

The information at the top of the screen and the progress bar at section 'S7' show the progress of the installation of the ASD Asyst Tool.

3.3.2 Installation Details

Click on the 'Show details' button at 'S8' to view the details of the installation.
Click on the 'Close' button at 'S9' to complete the installation process.

4 Uninstalling the Asyst Tool

The ASD Asyst Tool can be uninstalled from the PC using the program shortcut found under the Start Menu / programs / Siemens / Asyst, or from the Control Panel.

This will remove the Asyst Tool from the PC but will not delete any Project files created using the Asyst Tool, nor their folders.

If the default locations for the Hardware Reference Files or for any Language Files were changed using the Asyst Tool, then this uninstall process will not delete those files nor their folders. This will need to be done by the user.

4.1 Asyst Tool Uninstallation Screen

Figure 6 shows the uninstallation screen.

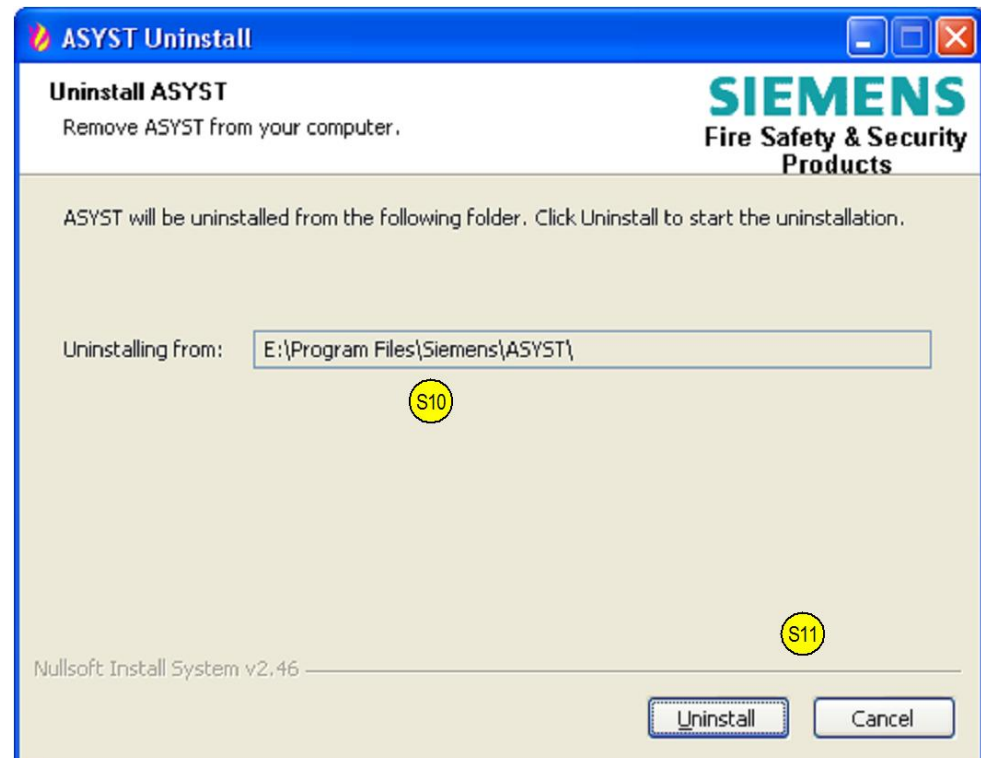


Figure 6 Asyst Tool uninstallation screen

This screen is used to start the uninstallation process for the ASD Asyst Tool.

4.1.1 Uninstallation Path

'S10' shows the folder selected at the time of installation; the Asyst Tool will be uninstalled from this folder.

Click on the 'Uninstall' button at 'S11' to start the uninstall process or click on the 'Cancel' button to leave the Asyst Tool installed on the PC.

4.2 Uninstallation Status Screen

Figure 7 shows the uninstallation status screen.

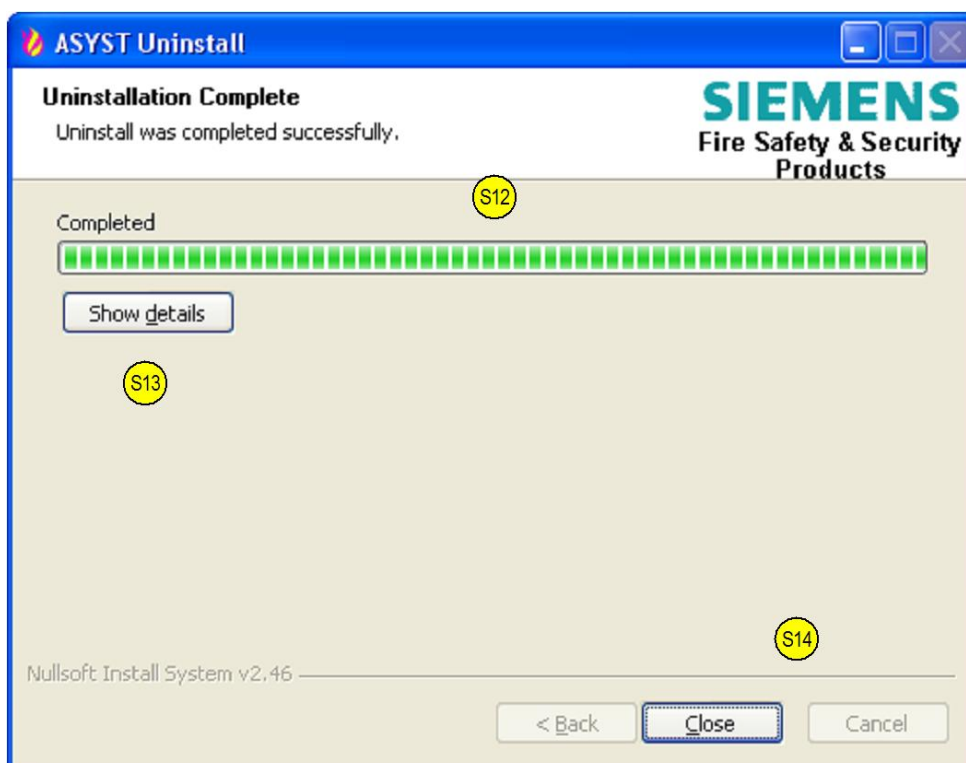


Figure 7 Asyst Tool uninstallation status screen

This screen shows the status of the uninstallation of the ASD Asyst Tool from the PC.

4.2.1 Uninstallation Progress Display

The progress 'S12' is displayed in the upper part of the screen.

4.2.2 Terminating Uninstallation

Click on the 'Close' button at 'S14' to complete the uninstall process.

Issued by
Siemens Switzerland Ltd
Infrastructure & Cities Sector
Building Technologies Division
International Headquarters
Gubelstrasse 22
CH-6301 Zug
Tel. +41 41-724 24 24
www.siemens.com/buildingtechnologies

© 2010-2014 Copyright Siemens Switzerland Ltd
Technical specifications and availability subject to change without notice.